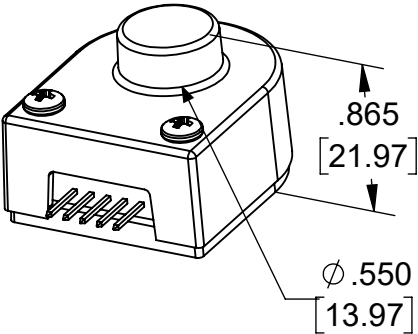
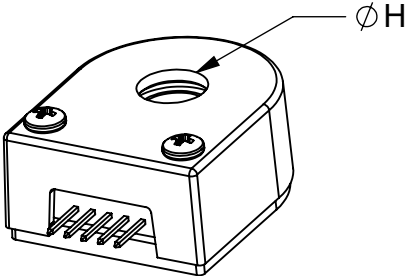


# E2 Optical Kit Encoder (Base and Cover Options)

E-OPTION COVER  
(EXTENSION FOR SHAFT  
LENGTHS UP TO .805 [20.45])

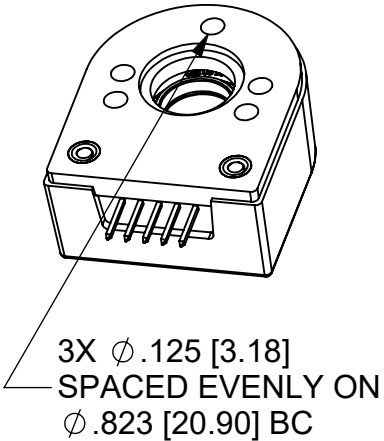


H-OPTION COVER  
(HOLE FOR SHAFT  
LENGTHS OVER .805 [20.45])

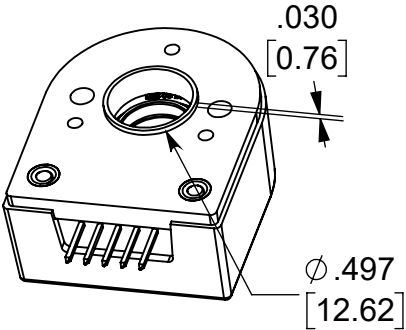


H = .375 [9.53] FOR SHAFT SIZES ≤ Ø.315 [8]  
H = .500 [12.70] FOR BORE SIZES > Ø.315 [8]

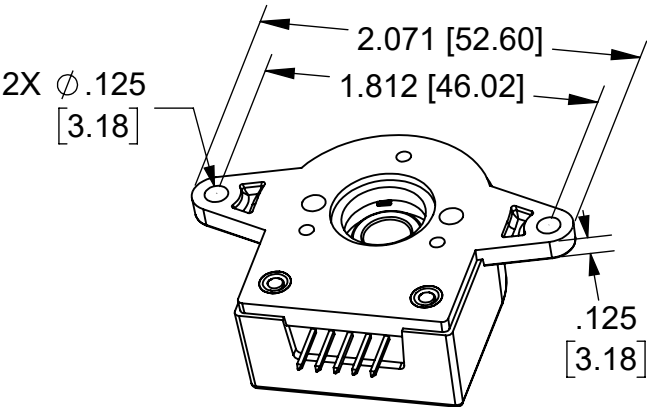
3-OPTION BASE  
(LARGER MOUNTING HOLES)



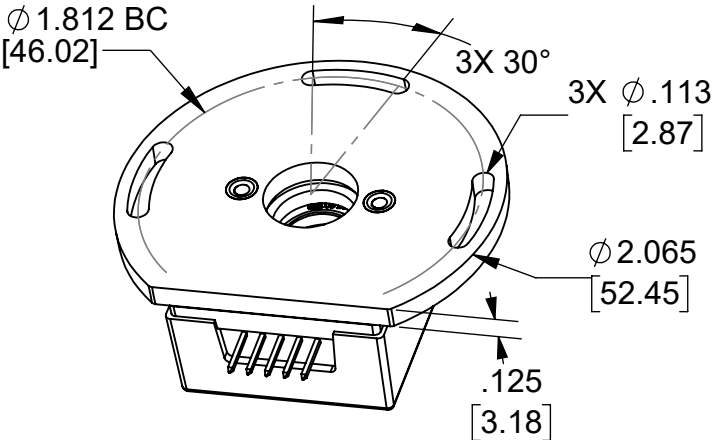
A-OPTION BASE  
(ALIGNMENT BOSS)



G-OPTION BASE  
(1.812 MOUNTING)



R-OPTION BASE  
(ROTATIONAL MOUNTING)



REQUIRES MINIMUM .570 [14.48] SHAFT LENGTH