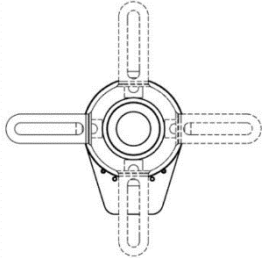


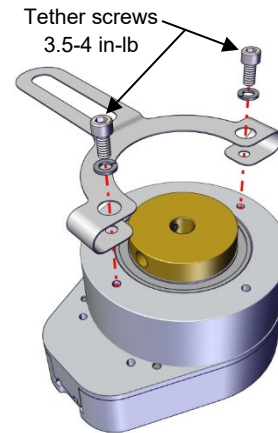
HB6M Assembly Instructions

Step 1:

Mount the tether to the encoder with the two 4-40 x 1/4" socket head cap screws and washers (supplied).

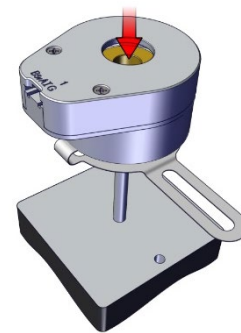


Note that the tether can be mounted in four different orientations.



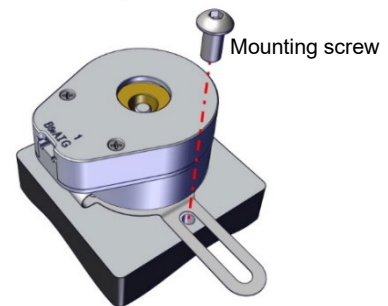
Step 2:

Slip the encoder down the motor shaft until the tether makes contact with the mounting surface.



Step 3:

Secure the tether with a mounting screw (not included). We recommend using a #1/4 or M6 screw.



Step 4:

Lock the encoder in place by tightening the two hub set screws with the provided hex wrench.

