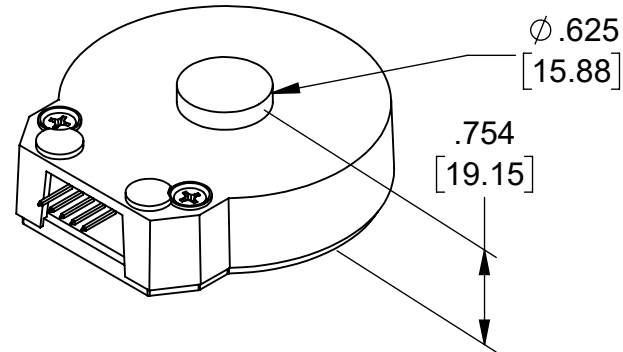


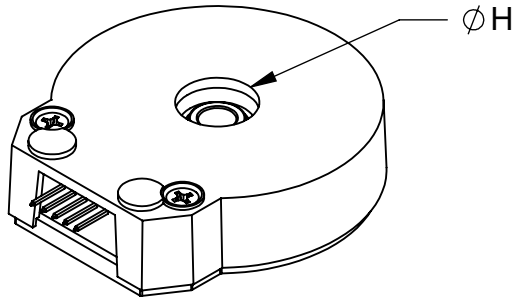
E3 Optical Kit Encoder (Base & Cover Options)

RELEASE DATE: 7/24/2025

E-OPTION COVER
(EXTENSION FOR SHAFT
LENGTHS UP TO .670 [17.02])

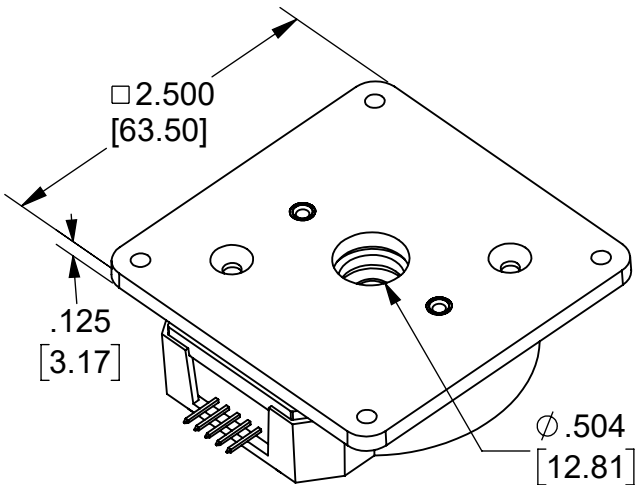


H-OPTION COVER (HOLE
FOR SHAFT LENGTHS
OVER .670 [17.02])

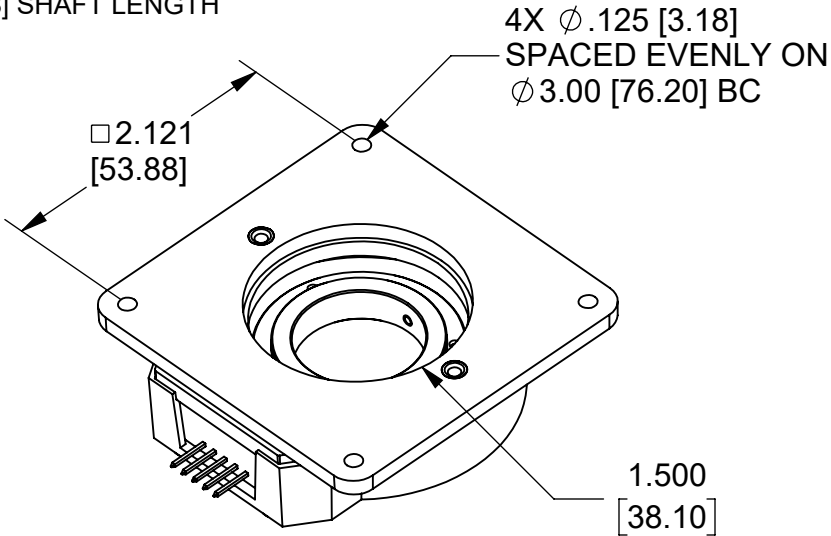


H = .550 [13.97] FOR SHAFT SIZES $\leq \phi .500$ [12.70]
H = 1.050 [26.67] FOR SHAFT SIZES $> \phi .500$ [12.70]

M-OPTION BASE
(MOUNTING PLATE)
REQUIRES MINIMUM .570 [14.48] SHAFT LENGTH



FOR SHAFTS $\leq \phi .394$ [10]



FOR SHAFTS $> \phi .394$ [10]