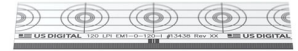


LIN Features

- Up to 35.5 in. long
- Up to 2000 LPI (when paired with the EM2 (<https://www.usdigital.com/EM2>))
- Index track option



LIN Product Description

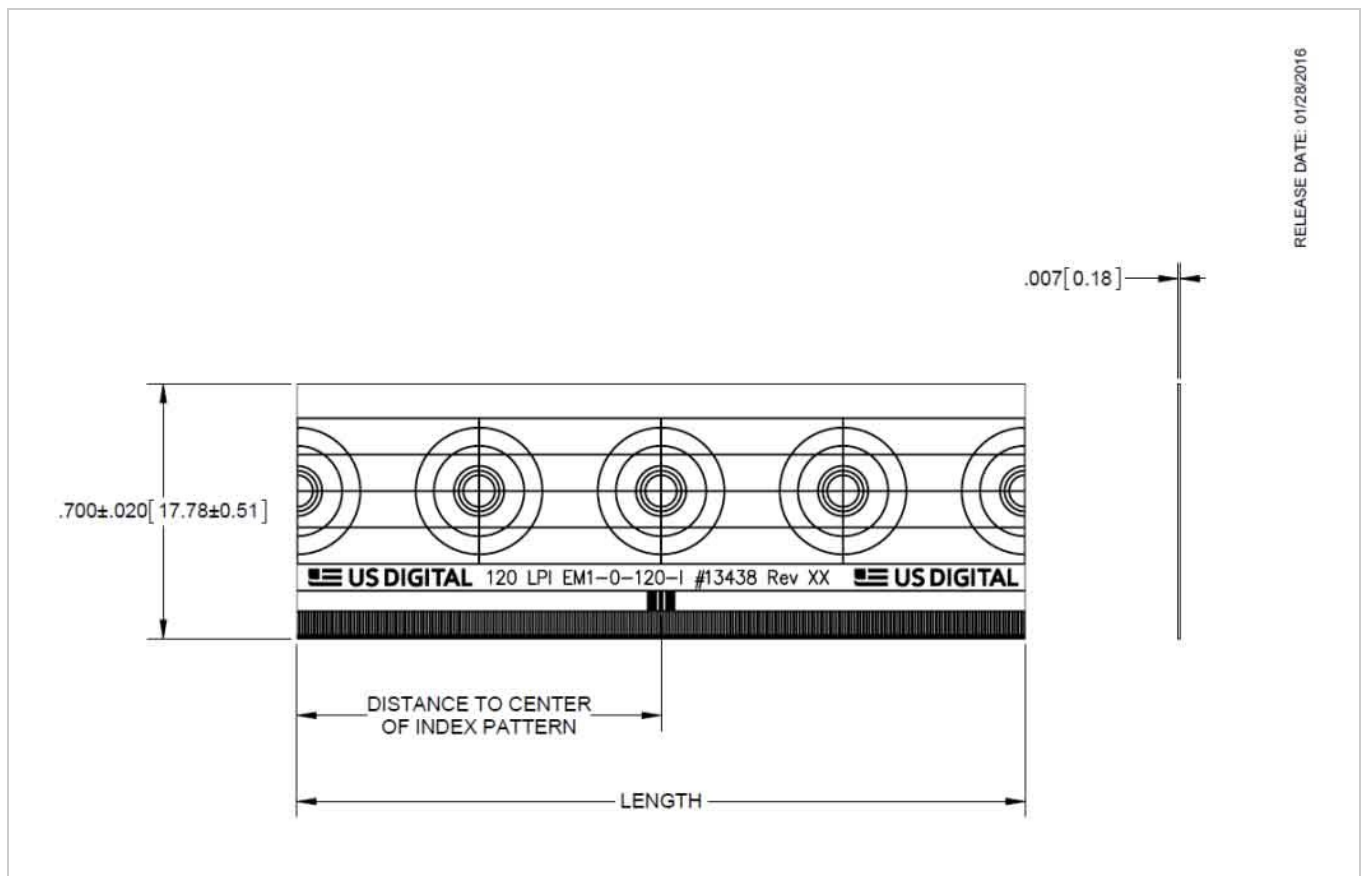
US Digital offers a wide variety of standard linear encoder strips. These products are available in many different resolutions and lengths. The material used is Mylar™ polyester film. This material is very rugged, with a wide temperature range of -40C to 100C.



The Mylar linear strips have a thickness of .007 in. and are cut to a width of 0.700 in. The index parameter in the part number configurator refers to the distance between the index mark and the left edge of the strip when the text is right-reading.

See the EM1 (<https://www.usdigital.com/em1>) and EM2 (<https://www.usdigital.com/em2>) pages for more information on compatible optical encoder modules.

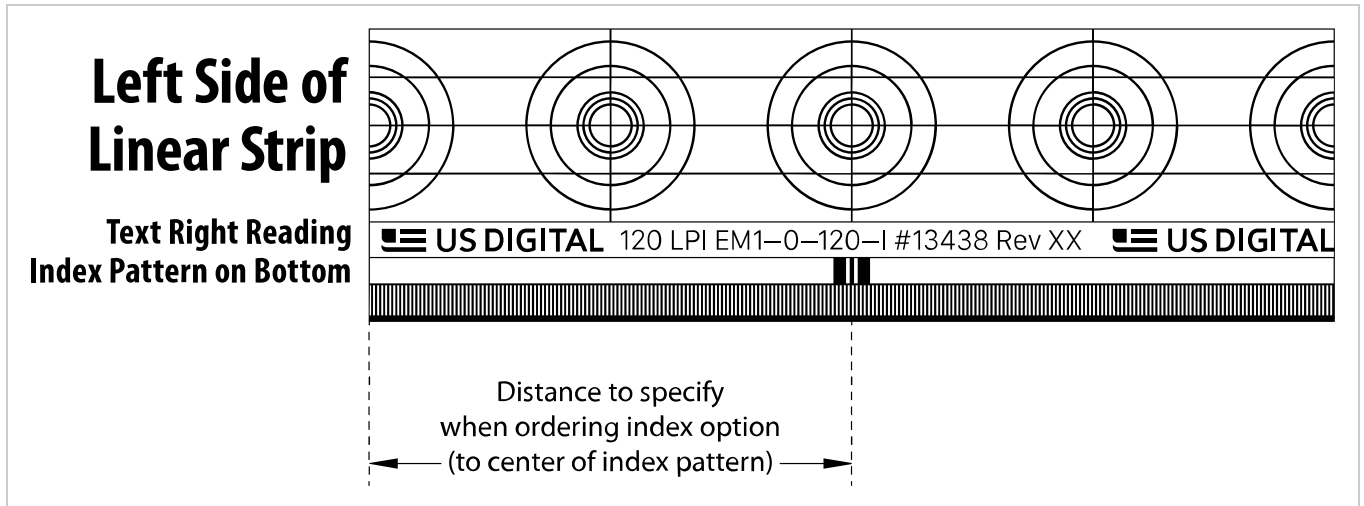
Mechanical Drawings



Specifications

INDEX OPTION

NUMBER OF INCHES FROM LEFT SIDE OF LINEAR STRIP.



COMPATIBLE OPTICAL ENCODER MODULES

LINES PER INCH (LPI)	WITH INDEX	NO INDEX
120	EM1-0-120-I	EM1-0-120-N
125	EM1-0-127-I*	EM1-0-127-N*
127	EM1-0-127-I	EM1-0-127-N
200	EM1-0-200-I	EM1-0-200-N
250	EM1-0-250-I	EM1-0-250-N
300	EM1-0-300-I	EM1-0-300-N
500	EM1-0-500-I	EM1-0-500-N
1000	EM2-0-1000-I	EM2-0-1000-N
2000	EM2-0-2000-I	EM2-0-2000-N

Other resolutions may be available upon request.

Notes

- US Digital® warrants its products against defects in materials and workmanship for two years. See complete



warranty (<https://www.usdigital.com/company/warranty>) for details.

Configuration Options

LIN	-	LPI	-	LIN_LENGTH	-	LIN_INDXX
		120		Length of linear strip		N = Non-Index (<i>Index location from left side of linear strip</i>)
		125				
		127				
		150				
		180				
		200				
		250				
		300				
		360				
		500				
		1000				
		2000				

PLEASE NOTE: This chart is for informational use only. Certain product configuration combinations are not available. Visit the LIN product page (<https://www.usdigital.com/products/LIN>) for pricing and additional information.