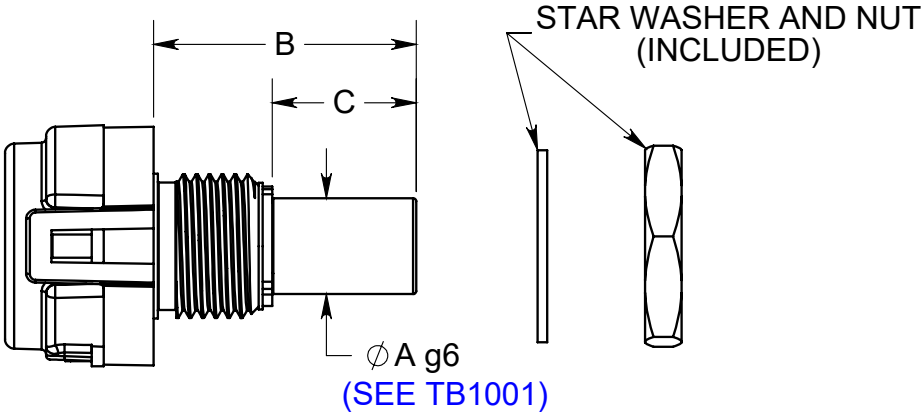
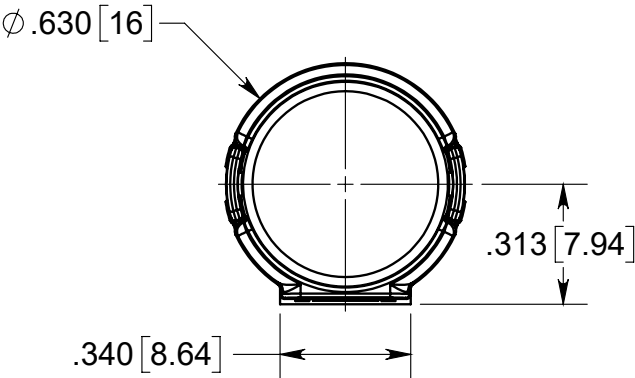


S16 Micro Rotary Shaft Encoder

RELEASE DATE: 1/19/2026



TORQUE	SHAFT $\phi$	A	B	C
D-OPTION AND N-OPTION	1/8" (.125)	.1250 [3.175]	.684 [17.37]	.350 [8.89]
	6mm (.236)	.2362 [6]	.684 [17.37]	.350 [8.89]
	1/4" (.250)	.2500 [6.350]	.684 [17.37]	.375 [9.53]
B-OPTION	1/8" (.125)	.1250 [3.175]	.695 [17.65]	.350 [8.89]
	6mm (.236)	.2362 [6]	.680 [17.27]	.375 [9.53]
	1/4" (.250)	.2500 [6.350]	.680 [17.27]	.375 [9.53]

