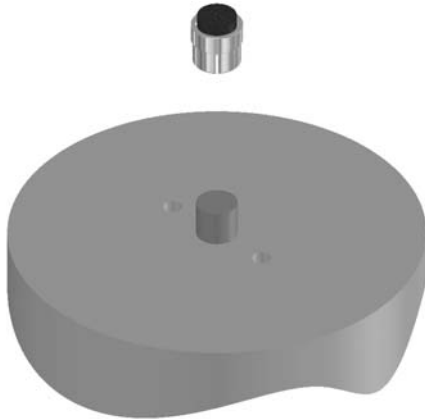


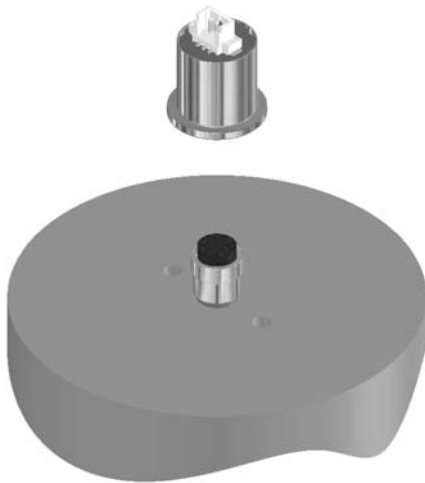
## 1. Push-on Magnetic Hub Installation

Slip **push-on magnetic hub** over shaft and firmly press down until top of shaft fills cavity of hub.



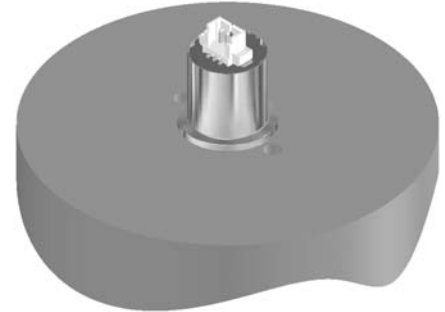
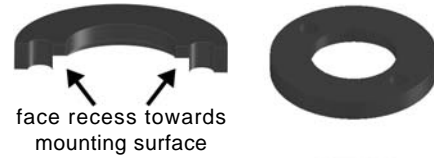
## 2. Encoder Body Installation

Place **encoder body** over shaft assembly so that it sits on mounting surface.



## 3. Base Installation

With recess in base facing towards mounting surface, place **base** over encoder body so that flange of body fits into recess of **base**.



## 4. Fastening Encoder In Place

Secure **base** to mounting surface with two #4-40 x 1/4" pan head screws (sold separately). If desired, encoder can be powered up and rotated by hand to any desired absolute position before these screws are tightened.

