

Description

The S1 series optical shaft encoder is a non-contacting rotary to digital converter. Useful for position feedback or manual interface, the encoder converts real-time shaft angle, speed, and direction into TTL-compatible quadrature outputs with or without index. The encoder utilizes an unbreakable mylar disk, metal shaft and bushing, LED light source, and monolithic electronics. It operates from a single +5VDC supply.

The S1 is normally designed for applications of 10 feet or less. For longer cable lengths, adding a PC4 / PC5 differential line driver is recommended.

Three shaft torque versions are available. The standard torque version has a sleeve bushing lubricated with a viscous motion control gel to provide torque and feel that is ideal for front panel human interface applications.

The no torque added option has a sleeve bushing and a low viscosity lubricant (that does not intentionally add torque) for low RPM applications where a small amount of torque is acceptable.

The ball bearing version uses miniature precision ball bearings that are suitable for high speed and ultra low torque applications.

Connection to the S1 series encoder is made through a 5-pin standard connector (sold separately). The mating connectors are available from US Digital with several cable options and lengths.

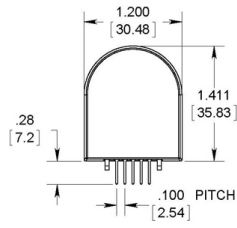


Features

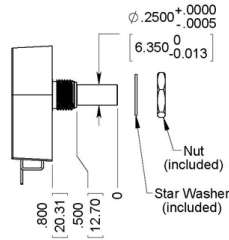
- ▶ Small size
- ▶ Low cost
- ▶ 2-channel quadrature, TTL squarewave outputs
- ▶ 3rd channel index option
- ▶ Tracks from 0 to 300000 cycles/sec
- ▶ Ball bearing option tracks to 10,000 RPM
- ▶ -40 to +100C operating temperature
- ▶ Single +5VDC supply
- ▶ 32 - 1250 CPR

Mechanical Drawing

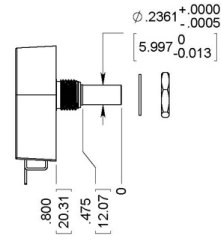
S1 Optical Shaft Encoder Drawing



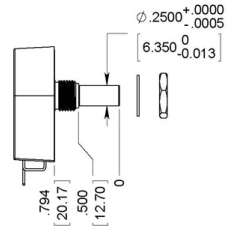
1/4" Sleeve Bushing



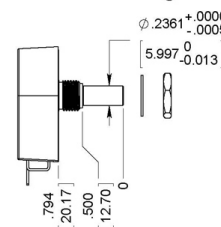
6mm Sleeve Bushing



1/4" Ball Bearing



6mm Ball Bearing



US DIGITAL 1400 NE 136th Avenue
Vancouver, Washington 98684, USA

info@usdigital.com
usdigital.com

Local: 360.260.2468
Toll-free: 800.736.0194

UNITS: INCHES [MM]
METRIC DIMENSIONS FOR REFERENCE ONLY

Environmental

Parameter	Value	Units
Operating Temperature	-40 to 100	C
Vibration (5Hz to 2kHz)	20	G
Electrostatic Discharge, Human Body Model	± 4	kV

Mechanical

Parameter	Sleeve Bushing	Ball Bearing
Max. Acceleration	250000 rad/sec ²	250000 rad/sec ²
Max. Shaft Speed	100 rpm	10000 rpm
Max. Shaft Torque	0.5 ±0.2 in-oz 0.3 in-oz (N-option)	0.05 in-oz
Max. Shaft Loading	2 lbs. dynamic 20 lbs. static	1 lb.
Bearing Life	> 1000000 revolutions	$L_{10} = (19.3/F_r)^3 *$ Where L_{10} = bearing life in millions of revs, and F_r = radial shaft loading in pounds
Weight	0.70 oz.	0.70 oz.
Max. Shaft Total Indicated Runout	0.0015 in.	0.0015 in.

Parameter	Sleeve Bushing	Ball Bearing
Max. Panel Nut Tightening Torque	20 in-lbs	20 in-lbs

* only valid with negligible axial shaft loading.

Phase Relationship

B leads A for clockwise shaft rotation, and A leads B for counterclockwise rotation viewed from the shaft side of the encoder (see the EM1 page).

Electrical

- Specifications apply over entire operating temperature range.
- Typical values are specified at $V_{cc} = 5.0V_{dc}$ and $25^{\circ}C$.
- For complete details, see the EM1 product page.

Parameter	Min.	Typ.	Max.	Units	Conditions
Supply Voltage	4.5	5.0	5.5	V	
Supply Current		27	30	mA	CPR < 500, no load
		55	57	mA	CPR ≥ 500, no load
Low-level Output			0.5	V	IOL = 8mA max.
High-level Output	2.0			V	IOH = -8mA max.
	4.2	4.8		V	no load
Output Current Per Channel	-8		8	mA	
Output Rise Time		110		nS	
Output Fall Time		35		nS	

Pin-out

Parameter	Dimension
1	Ground
2	Index
3	A channel
4	+5VDC power
5	B channel

Ordering Information

S1 -	<input type="text"/>	-	<input type="text"/>	-	<input type="text"/>	-	<input type="text"/>	-	<input type="text"/>
	CPR		Shaft		Index		Torque		Housing
	32		236 =6mm dia. sleeve bushing		NE =No Index		D =Standard		D =Default
	50		(standard torque)		IE =Index		B =Ball Bearing		S =Sealed Housing
	96		250 =1/4"				N =No Torque Added		
	100								
	192								
	200								
	250								
	256								
	360								
	400								
	500								
	512								
	540								
	720								
	900								
	1000								
	1024								
	1250								

Rules

- Index must be equal to NE when CPR is equal to 32

Notes

- Cables and connectors are not included and must be ordered separately.
- For ordering information please see the Compatible Cables / Connectors section above.
- US Digital warrants its products against defects in materials and workmanship for two years. See complete warranty for details.

Base Pricing

Quantity	Price
1	\$65.85
10	\$56.87
50	\$50.37
100	\$47.06

- ▶ Add \$1.00 per unit for **Shaft** of 6mm dia. sleeve bushing (standard torque)
- ▶ Add \$5.80 per unit for **Torque** of Ball Bearing
- ▶ Add \$14.00 per unit for **Housing** of Sealed Housing
- ▶ Add 17% per unit for **Index** of 1 or **CPR** greater than or equal to 1000.